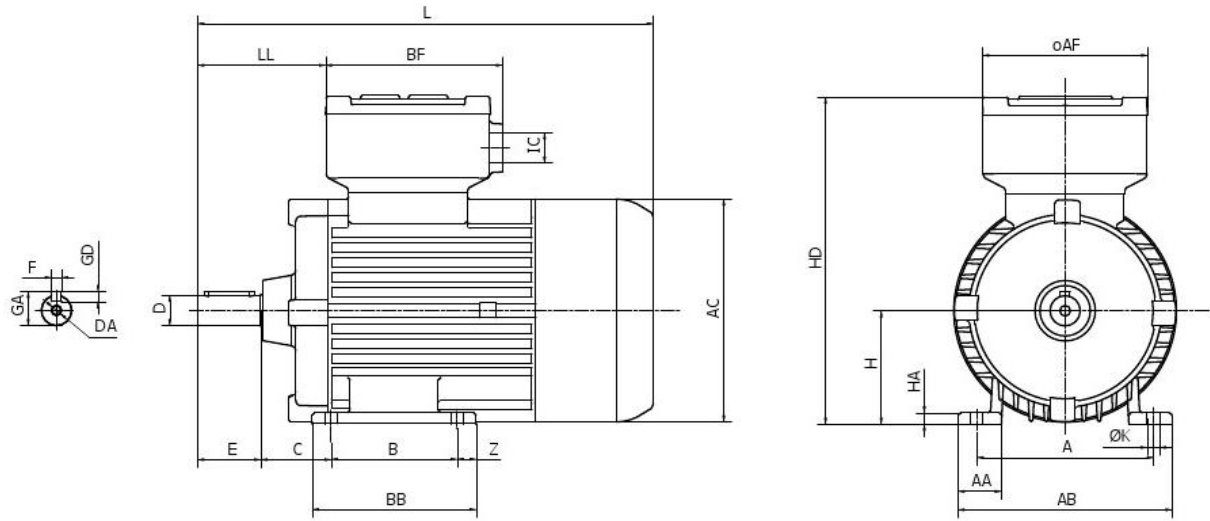


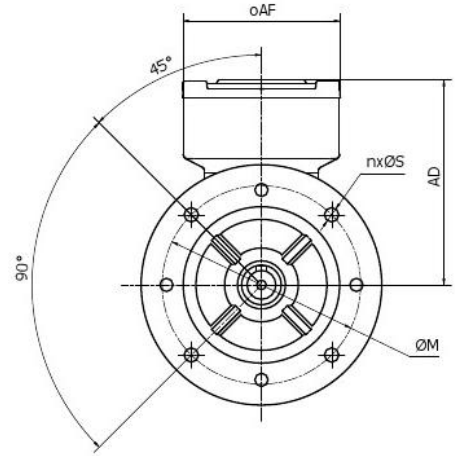
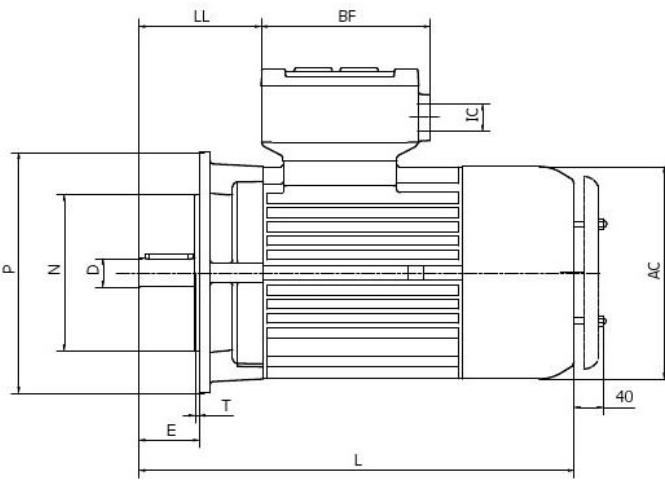
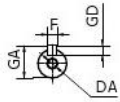
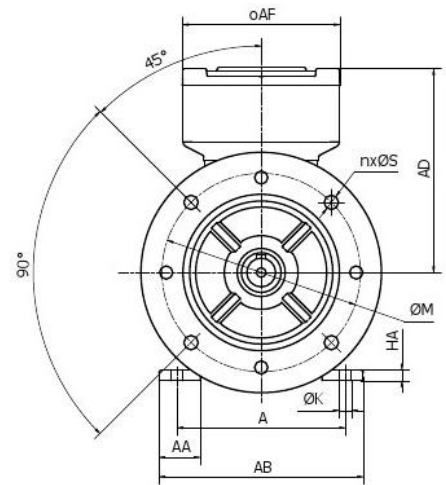
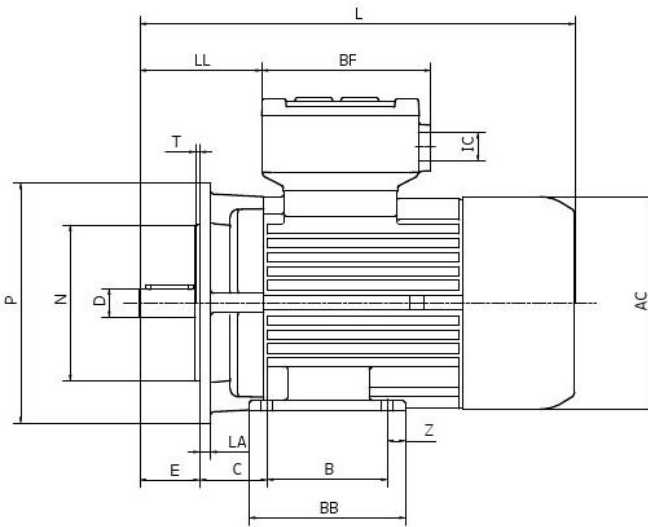
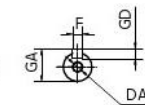
B3



DIMENSIONI D'INGOMBRO B3 - OVERALL DIMENSIONS B3 - ENCOMBREMENTS B3

Tipo	A	AA	AB	AC	AF	B	BB	BF	C	D	DA	E	F	GA	GD	H	HA	HD	K	L	LL	Z	IC-GK
56 A	90	23	105	110	91	71	90	104	36	9	M3	20	3	10,2	3	56	6	176	6	210	53	9	1x1/2"
63 A / B	100	30	120	123	101	80	100	114	40	11	M4	23	4	12,5	4	63	7	198	7	244	68	10	1x1/2"
71 A / B	112	32	140	139	101	90	110	114	45	14	M5	30	5	16	5	71	8	215	7	284	80	10	1x1/2"
80 A / B	125	39	155	157	131	100	130	141	50	19	M6	40	6	21,5	6	80	9	238	10	323	85	15	1x3/4"
90 S	140	34	170	177	131	100	130	141	56	24	M8	50	8	27	7	90	9	256	10	362	102	15	1x3/4"
90 L	140	34	170	177	131	125	155	141	56	24	M8	50	8	27	7	90	9	256	10	382	102	15	1x3/4"
100 LA / LB	160	45	196	196	131	140	170	141	63	28	M10	60	8	31	7	100	12	285	12	449	129	15	1x3/4"
112 M	190	48	224	221	151	140	170	163	70	28	M10	60	8	31	7	112	12	318	12	452	128	15	2x1"
132 S	216	60	260	260	151	140	180	163	89	38	M12	80	10	41	8	132	13	355	12	526	138	20	2x1"
132 M	216	60	260	260	151	178	220	163	89	38	M12	80	10	41	8	132	13	355	12	566	138	22	2x1"
160 M	254	75	306	317	201	210	260	219	108	42	M16	110	12	45	8	160	15	423	15	631	175	28	2x1"
160 L	254	75	306	317	201	254	300	219	108	42	M16	110	12	45	8	160	15	423	15	671	175	24	2x1"
180 M	279	83	341	348	201	241	303	215	121	48	M16	110	14	51,5	9	180	20	482	15	755	209	31	2x1"
180 L	279	83	341	348	201	279	340	215	121	48	M16	110	14	51,5	9	180	20	482	15	795	209	30	2x1"
200 L	318	93	380	385	262	305	370	286	133	55	M20	110	16	59	10	200	22	566	18	870	213	32	2x1 1/2"
225 S	356	110	434	433	262	286	365	286	149	60	M20	140	18	64	11	225	25	611	19	917	248	50	2x1 1/2"
225 M 2	356	110	434	433	262	311	390	286	149	55	M20	110	16	59	10	225	25	611	19	927	248	50	2x1 1/2"
225 M 4-8	356	110	434	433	262	311	390	286	149	60	M20	140	18	64	11	225	25	611	19	957	248	50	2x1 1/2"
250 M 2	406	122	486	480	262	349	425	286	168	60	M20	140	18	64	11	250	25	661	24	986	254	38	2x1 1/2"
250 M 4-8	406	122	486	480	262	349	425	286	168	65	M20	140	18	69	11	250	25	661	24	986	254	38	2x1 1/2"

Dimensioni in mm - Dimension in mm - Dimensiones en mm

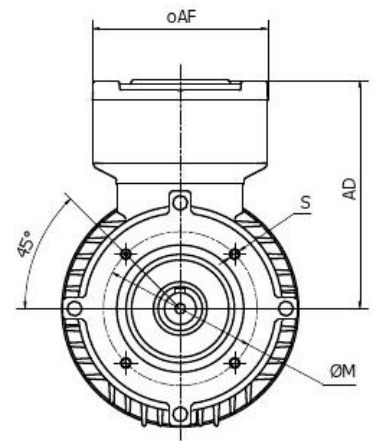
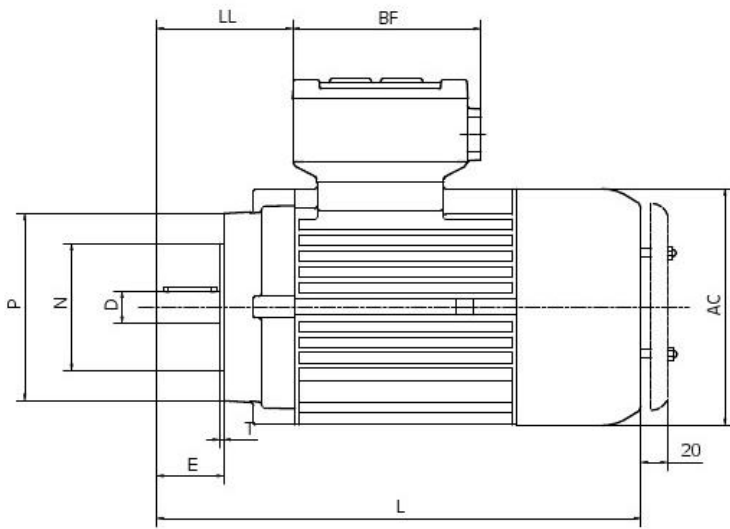
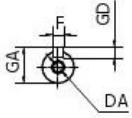
B5**B35**

DIMENSIONI D'INGOMBRO B5, B35 - OVERALL DIMENSIONS B5, B35 - ENCOMBREMENTS B5, B35

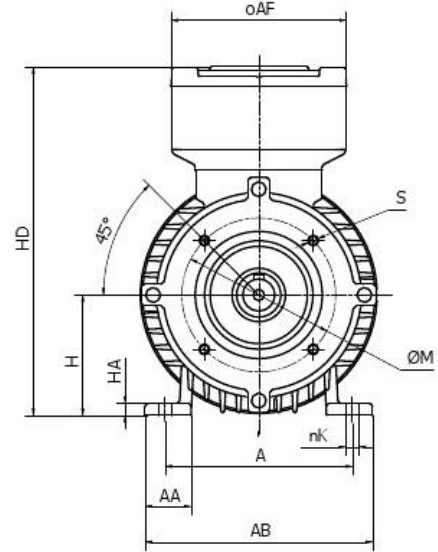
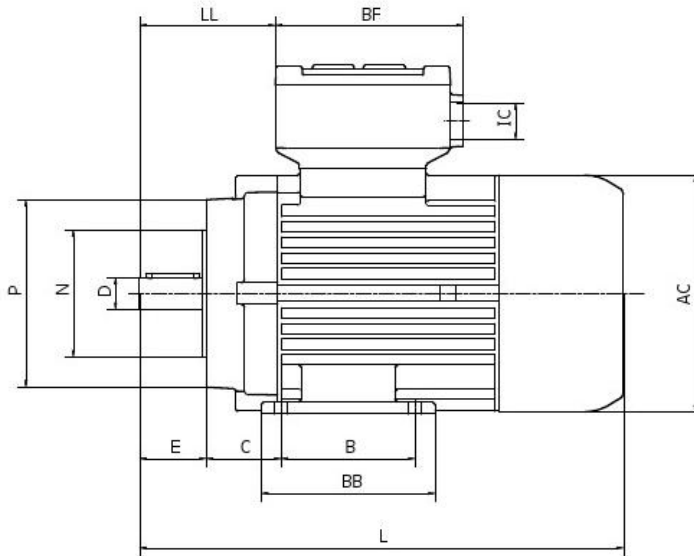
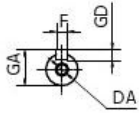
Tipo	A	AA	AB	AC	AD	AF	B	BB	BF	C	D	DA	E	F	GA	GD	K	L	LA	LL	M	N	P	n	S	U	T	IC-GK
56 A	90	22	105	110	120	91	71	90	104	36	9	M3	20	3	10,2	3	5,8	210	8	53	100	80	119	4	7	45°	3	1x½"
63 A / B	100	30	120	123	135	101	80	100	114	40	11	M4	23	4	12,5	4	7	244	8	68	115	95	140	4	10	45°	3	1x½"
71 A / B	112	32	140	139	144	101	90	110	114	45	14	M5	30	5	16	5	7	284	8	80	130	110	160	4	10	45°	3,5	1x½"
80 A / B	125	39	155	157	158	131	100	130	141	50	19	M6	40	6	21,5	6	10	323	9	85	165	130	200	4	12	45°	3,5	1x¾"
90 S	140	34	170	177	166	131	100	130	141	56	24	M8	50	8	27	7	10	382	9	102	165	130	200	4	12	45°	3,5	1x¾"
90 L	140	34	170	177	166	131	125	155	141	56	24	M8	50	8	27	7	10	382	9	102	165	130	200	4	12	45°	3,5	1x¾"
100 LA / LB	160	45	196	196	185	131	140	170	141	63	28	M10	60	8	31	7	12	449	10	129	215	180	250	4	15	45°	4	1x¾"
112 M	190	48	224	221	206	151	140	170	163	70	28	M10	60	8	31	7	12	452	11	128	215	180	250	4	15	45°	4	2x1"
132 S	216	60	260	260	223	151	140	180	163	89	38	M12	80	10	41	8	12	526	12	138	265	230	300	4	15	45°	4	2x1"
132 M	216	60	260	260	223	151	178	220	163	89	38	M12	80	10	41	8	12	566	12	138	265	230	300	4	15	45°	4	2x1"
160 M	254	75	306	317	263	201	210	260	219	108	42	M16	110	12	45	8	15	631	14	175	300	250	350	4	19	45°	5	2x1"
160 L	254	75	306	317	263	201	254	300	219	108	42	M16	110	12	45	8	15	671	14	175	300	250	350	4	19	45°	5	2x1"
180 M	279	83	341	348	302	201	241	303	215	121	48	M16	110	14	51,5	9	15	755	15	209	300	250	350	4	19	45°	5	2x1"
180 L	279	83	341	348	302	201	279	340	215	121	48	M16	110	14	51,5	9	15	795	15	209	300	250	350	4	19	45°	5	2x1"
200 L	318	93	380	385	366	262	305	370	286	133	55	M20	110	16	59	10	18	870	18	213	350	300	400	4	19	45°	5	2x1½"
225 S	356	110	434	433	386	262	286	365	286	149	60	M20	140	18	64	11	19	917	18	248	400	350	450	8	19	22,5°	5	2x1½"
225 M 2	356	110	434	433	386	262	311	390	286	149	55	M20	110	16	59	10	19	927	18	248	400	350	450	8	19	22,5°	5	2x1½"
225 M 4-8	356	110	434	433	386	262	311	390	286	149	60	M20	140	18	64	11	19	957	18	248	400	350	450	8	19	22,5°	5	2x1½"
250 M 2	406	122	486	480	411	262	349	425	286	168	60	M20	140	18	64	11	24	986	18	254	500	450	550	8	19	22,5°	5	2x1½"
250 M 4-8	406	122	486	480	411	262	349	425	286	168	65	M20	140	18	69	11	24	986	18	254	500	450	550	8	19	22,5°	5	2x1½"

Dimensioni in mm - Dimension in mm - Dimensiones en mm

B14



B34



DIMENSIONI D'INGOMBRO B14, B34 - OVERALL DIMENSIONS B14, B34 - ENCOMBREMENTS B14, B34

Tipo	A	AA	AB	AC	AD	AF	B	BB	BF	C	D	DA	E	F	GA	GD	H	HA	HD	K	L	LL	M	N	P	S	T	IC-GK
56 A	90	22	105	110	120	91	71	90	104	36	9	M3	20	3	10,2	3	56	6	176	6	210	53	65	50	80	M5	2,5	1x1/2"
63 A / B	100	30	120	123	135	101	80	100	114	40	11	M4	23	4	12,5	4	63	7	201	7	244	68	75	60	90	M5	2,5	1x1/2"
71 A / B	112	32	140	139	144	101	90	110	114	45	14	M5	30	5	16	5	71	8	218	7	284	80	85	70	105	M6	2,5	1x1/2"
80 A / B	125	39	155	157	158	131	100	130	141	50	19	M6	40	6	21,5	6	80	9	237	10	323	85	100	80	120	M6	3	1x3/4"
90 S	140	34	170	177	166	131	100	130	141	56	24	M8	50	8	27	7	90	9	255	10	362	102	115	95	140	M8	3	1x3/4"
90 L	140	34	170	177	166	131	125	155	141	56	24	M8	50	8	27	7	90	9	255	10	382	102	115	95	140	M8	3	1x3/4"
100 LA / LB	160	45	196	196	185	131	140	170	141	63	28	M10	60	8	31	7	100	12	285	12	449	129	130	110	160	M8	3,5	1x3/4"
112 M	190	48	224	221	206	151	140	170	163	70	28	M10	60	8	31	7	112	12	318	12	452	128	130	110	160	M8	3,5	2x1"

Dimensioni in mm - Dimension in mm - Dimensiones en mm