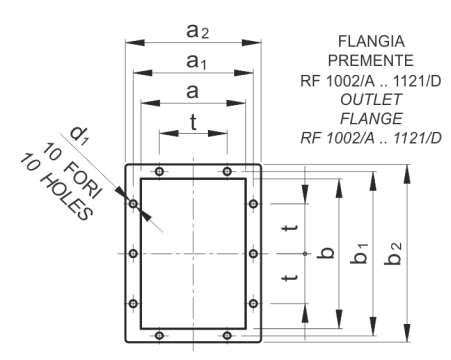
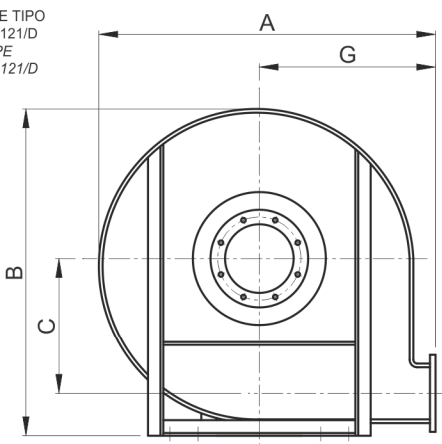
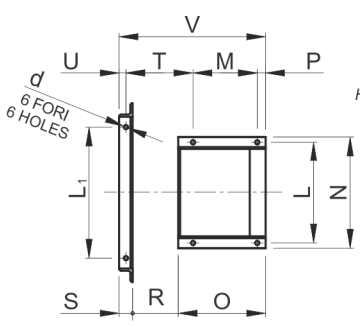


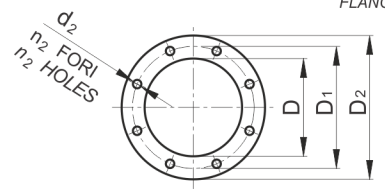
VENTILATORE TIPO
RF 902/A .. 1121/D
FAN TYPE
RF 902/A .. 1121/D



FLANGIA
PREMENTE
RF 1002/A .. 1121/D
OUTLET
FLANGE
RF 1002/A .. 1121/D



FORATURE
BASAMENTO
BASEMENT
HOLES PLATE



FLANGIA
ASPIRAZIONE
INLET
FLANGE

TABELLA ORIENTAMENTI - TABLE OF DISCHARGE POSITIONS

	0	45	90	135	180	225	270	315
LG +								
RD +								
	H ₁			H ₂			H	

Ventilatore Tipo Fan Type	Flangia aspirazione Inlet flange					Flangia premente Outlet flange										Peso Weight kg
	D	D ₁	D ₂	d ₂	n ₂	a	b	a ₁	b ₁	a ₂	b ₂	d ₁	n fori n holes	t		
RF 501/A	185	219	255	11.5	8	90	125	130	165	150	185	9.5	6	100	60	
RF 562/A	205	241	275	11.5	8	100	140	141	182	170	210	11.5	6	112	79	
RF 561/A															88	
RF 631/A	229	265	299	11.5	8	112	160	153	200	182	230	11.5	6	112	102	
RF 631/B															115	
RF 712/A															150	
RF 712/B	229	265	299	11.5	8	125	180	167	219	195	250	11.5	6	112	155	
RF 712/C															162	
RF 711/A															150	
RF 711/B															165	
RF 711/C															215	
RF 802/A	286	332	366	11.5	8	140	200	182	241	210	270	11.5	8	112	225	
RF 802/B															280	
RF 802/C															295	
RF 801/A															285	
RF 801/B															300	
RF 801/C	320															
RF 801/D	195															
RF 902/A	286	332	366	11.5	8	160	224	200	265	230	294	11.5	8	112	370	
RF 902/B															400	
RF 902/C															450	
RF 902/D															310	
RF 901/A															375	
RF 901/B	405															
RF 901/C	455															
RF 901/D	465															
RF 901/E	325															
RF 1002/A	321	366	401	11.5	8	180	250	219	292	250	320	11.5	10	112	550	
RF 1002/B															560	
RF 1002/C															600	
RF 1002/D															450	
RF 1001/A															565	
RF 1001/B	605															
RF 1001/C	680															
RF 1001/D	475															
RF 1122/A	361	405	441	11.5	8	224	315	273	366	304	395	11.5	10	125	930	
RF 1122/B															960	
RF 1122/C															1125	
RF 1122/D															680	
RF 1121/A															970	
RF 1121/B	1135															
RF 1121/C	1180															
RF 1121/D	710															